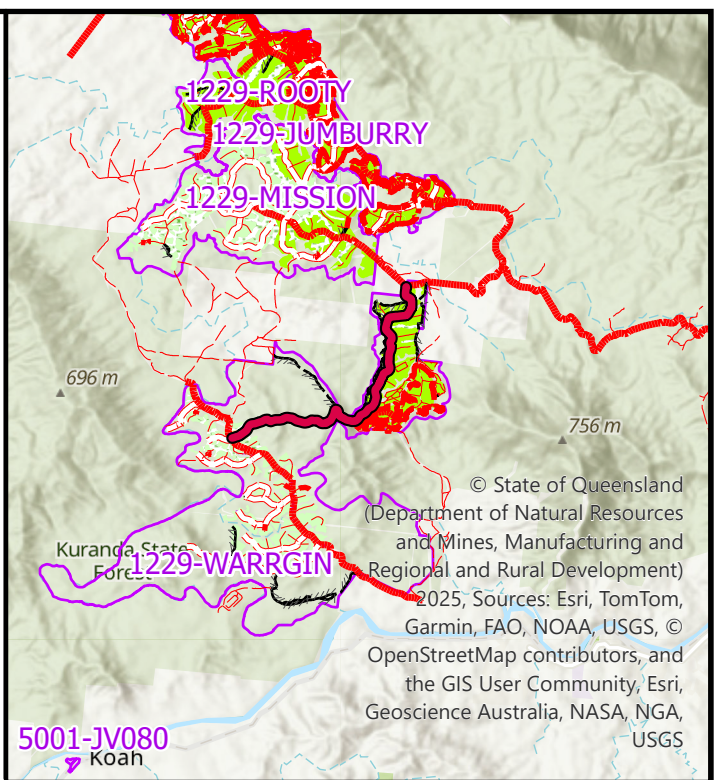


© State of Queensland (Department of Natural Resources and Mines, Manufacturing and Regional and Rural Development) 2025; Sources: Esri, TomTom, Garmin, FAO, NOAA, USGS, © OpenStreetMap contributors, and the GIS User Community, Esri, Geoscience Australia, NASA, NGA, USGS

## Temporary Road Closure Forestry Access Road Kuranda State Forest



Prepared by HQPlantations Pty Ltd. solely for internal use. HQPlantations Pty Ltd does not accept any responsibility for any loss or damage resulting from reliance on the map. No part of this map may be reproduced or copied in any form without prior written permission from HQPlantations Pty Ltd. All rights reserved. ©



© State of Queensland (Department of Natural Resources and Mines, Manufacturing and Regional and Rural Development) 2025; Sources: Esri, TomTom, Garmin, FAO, NOAA, USGS, © OpenStreetMap contributors, and the GIS User Community, Esri, Geoscience Australia, NASA, NGA, USGS